

# Product specification

**Name** : LCD7 Panel

**Number:** QY-KKZ101002RG

**Version** : V1.0

## Summary

The purpose of this product design is to provide users with a large size (7 inches), high performance and intelligent lighting and smart home control terminals that can meet the needs of users' personalized operation interfaces.

The hardware performance of the device has the following outstanding features::

1) Rich communication interfaces, including: TCP/IP cable, wireless Wifi, Bluetooth, wired DALI lighting interface, RS485, USB and SD card and other communication interfaces.

2) Rich human-computer interaction devices, including: 5-point touch LCD screen, proximity sensor, physically blocked camera (effective protection of privacy, preventing hacking), microphone, speaker, LED indicator light.

3) Magnetic installation design, easy to install and maintain.

4) CNC aluminum alloy carved frame, 8.5mm thickness ultra-thin body design, sturdy and durable, stylish appearance.

5) Supports both in-wall and desktop installations, both on the wall and on the desktop.



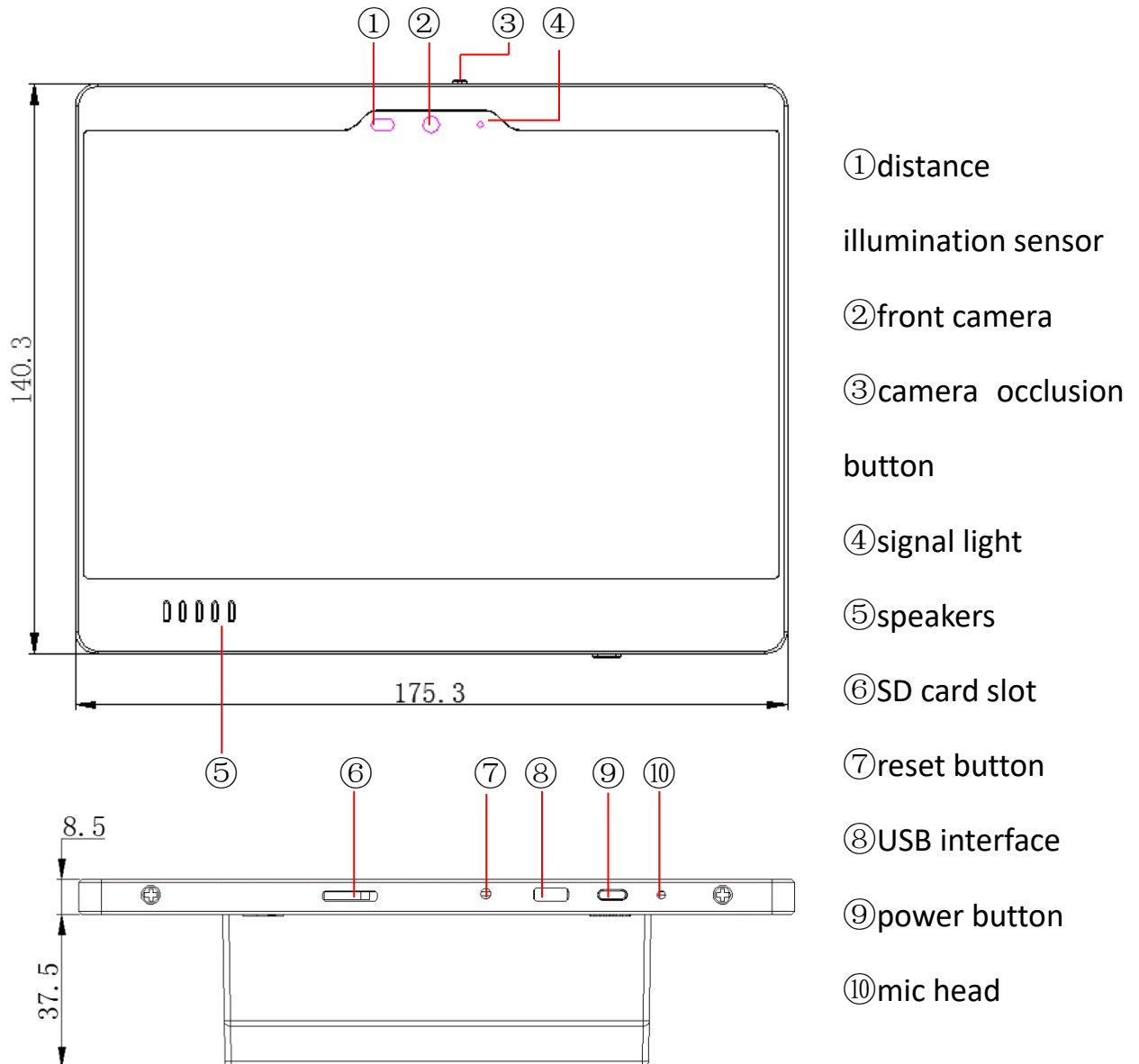
The software performance of the device has the following outstanding features:

1) Based on the Android operating system, support rich app application and personalized feature customization.

2) Equipped with dedicated DALI lighting control interface editing software, you can freely define the number, shape, color, transparency, background image and control target and motion command of each button on the lighting control interface.

3) For complex intelligent lighting and smart home systems, it can realize centralized control of multiple systems and regions, and also realize interconnection and centralized control of multiple electrical subsystems such as lighting, curtains, air conditioners, security and background music.

## Size and appearance

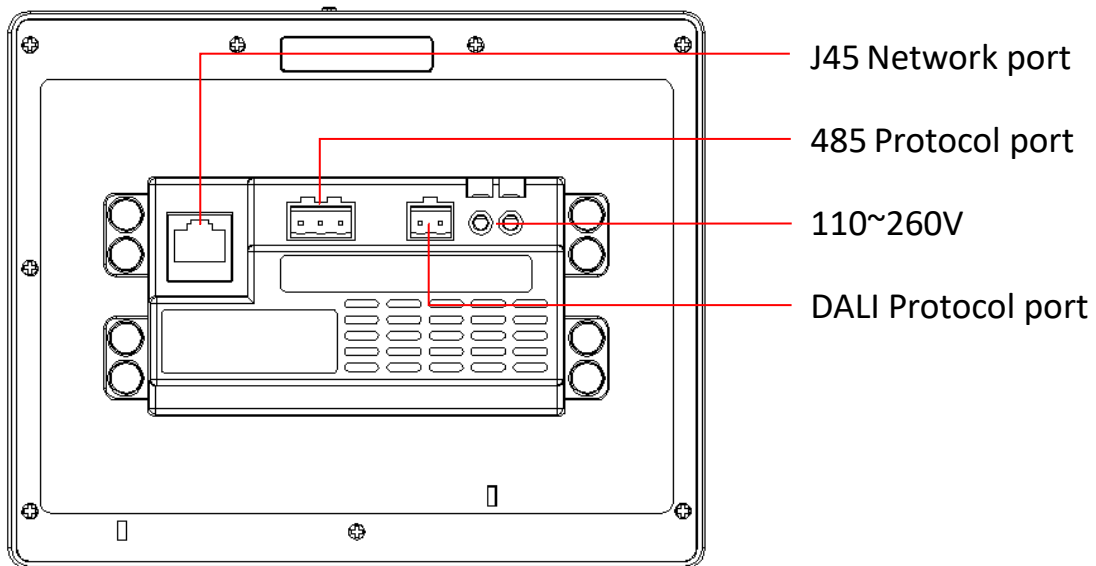


## Specifications and parameters

main	Model	QY-KKZ102001RG
	Color	Gold
	operating system	Android 6.0.1
Configuration	storage	8GB
	System memory	1GB
	processor	QuadCore-A64
	Extended support	Micro SD
	Scalable capacity	32G

display	screen size	7 inch
	Screen Resolution	1920x1200
	screen ratio	16:9
	Screen type	IPS
	Screen description	Fully fitted capacitive screen
	Pointing device	touch screen
connection	WIFI function	support
	Bluetooth function	support
Sound effect	speaker	Have
Features	camera	Front
	Pixel camera	500W
	Multi-point control	Support 5 touch
	sensor	distance sensor
power supply	AC input	AC110~260V 50Hz
	power	5W
specification	size	175.3*137.3*46mm
	Net weight of the host	410 grams
	Optional: Countertop base (with accessories)	300 grams
	Optional: wall mounting bottom box (with accessories)	183grams
packing list	Host x1, data line x1, product specification x1	
	Wall mounting plate x1, mounting screws x1, 144 pre-embedded box x1 (optional)	
	Desktop placement base x1, power supply and signal two-in-one line x1 (optional)	

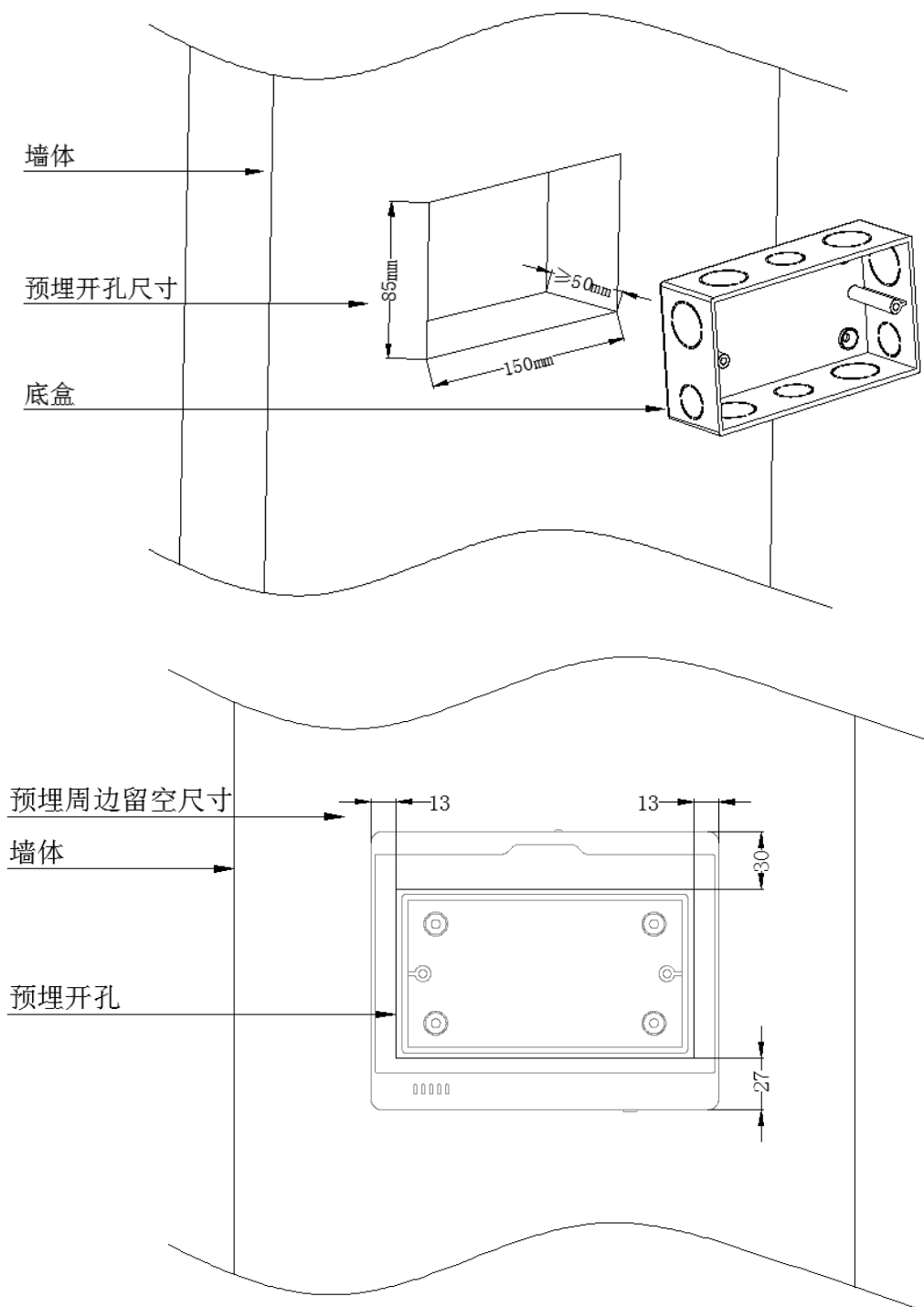
### Product wiring diagram



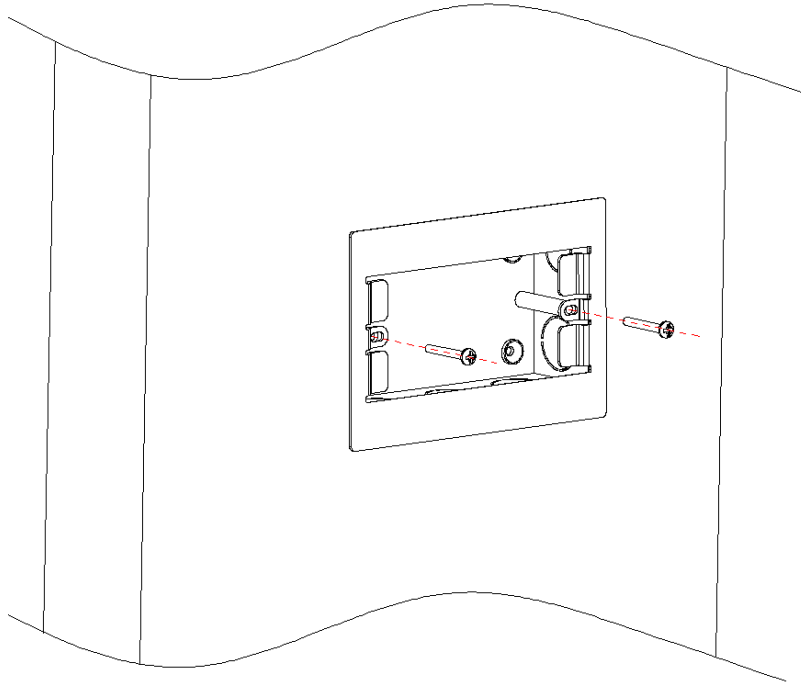
## Installation Notes:

### 1、 Wall mounting method

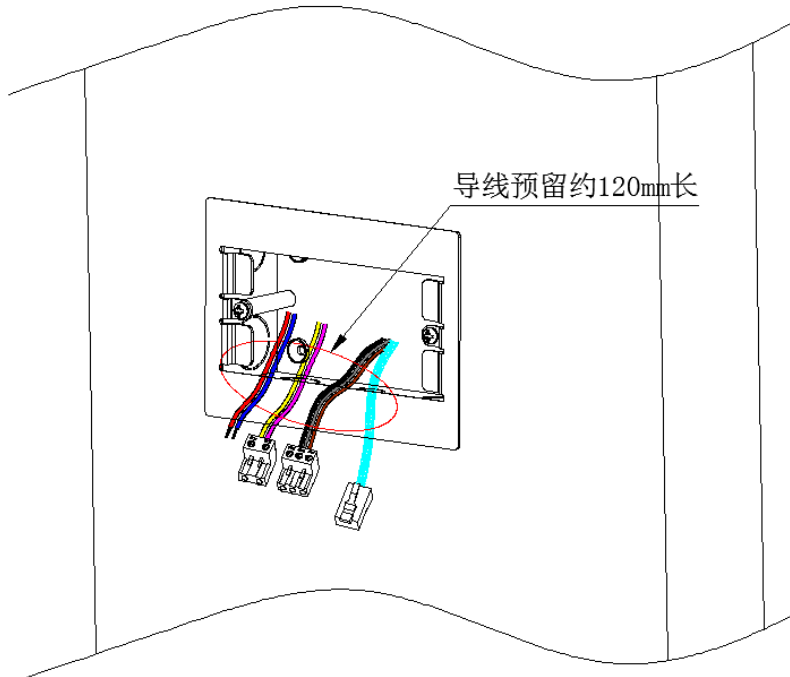
#### 1.1 The opening and the bottom case are fixed.



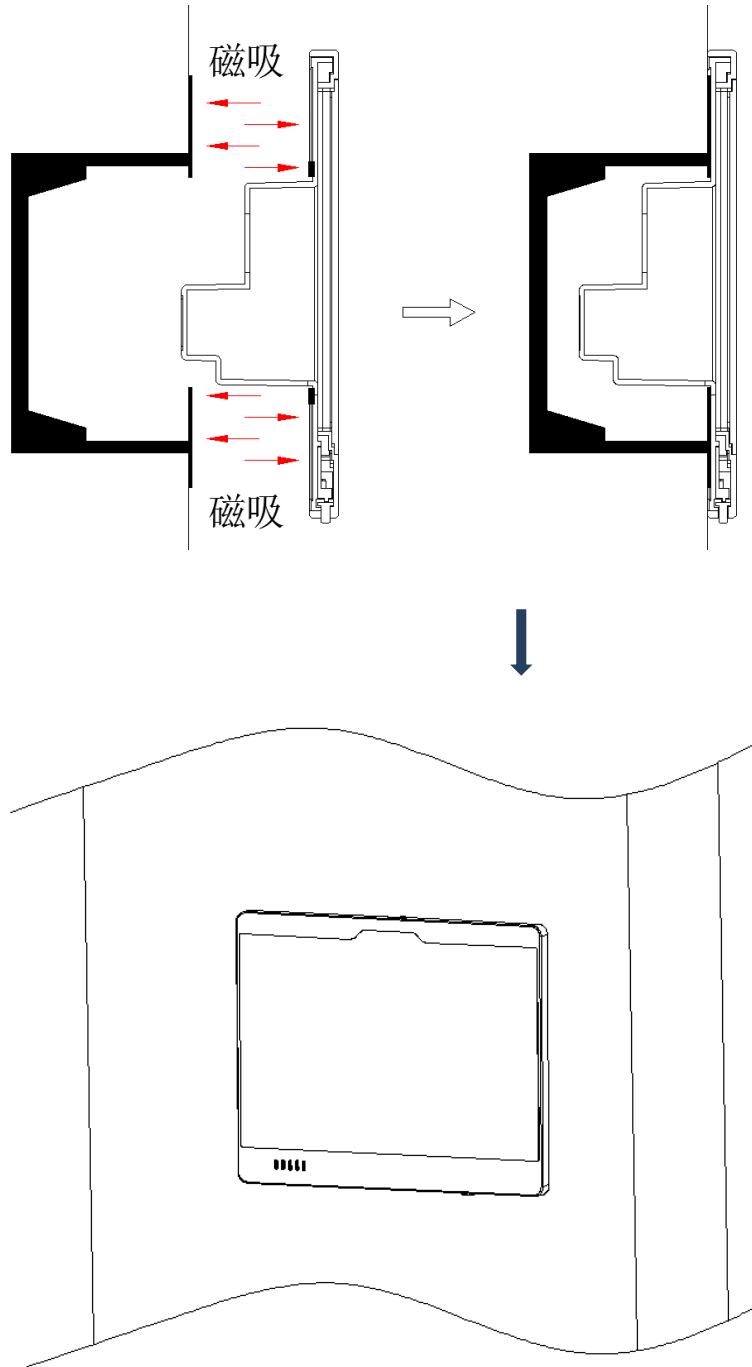
#### 1.2 Install the fixed wall mounting plate.



1.3, wiring.

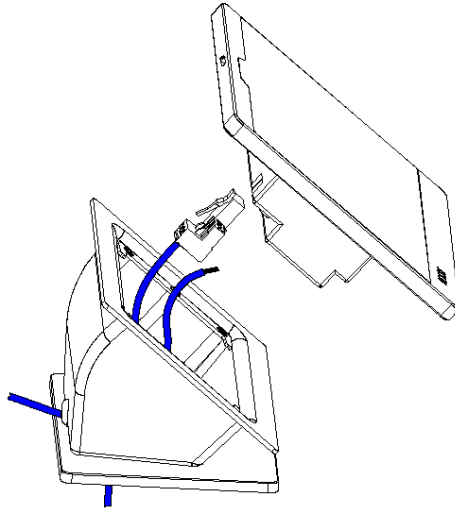


1.4、Fixed product

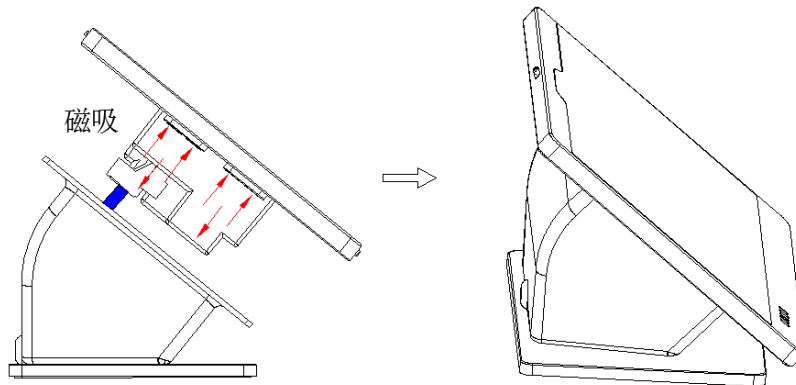


## 2、 Wall mounting method

### 2.1 base lead



2.2 fixed



## Precautions

1. This machine is suitable for 110~260V power supply. Please install and debug under the guidance of a professional.
2. Please read the installation instructions carefully and install the product according to the installation instructions.
3. Please read the wiring instructions carefully. Different wiring ports should not be mixed.
4. Confirm that all connections are correct before turning them on.
5. Do not modify, disassemble, or upgrade this product.
6. Please turn off the main power switch if you do not use this product for a long time.

## Warranty regulations

The company strictly implements the relevant provisions of the national three-package of electronic products.

This product belongs to the intelligent series. If the company is not a professional, please do not open the machine. If the product is faulty due to human or non-professionals, the company will not guarantee the product, thank you for your cooperation!